

***YOU WOULD BE SURPRISED... A LITTLE BIT OF WORK WILL GO A LONG WAY TOWARDS SPRUCING UP YOUR PARISH. LET ICS HELP YOU PROCURE THE PRODUCTS AND SERVICES YOU MAY NEED TO TACKLE THOSE SPRING & SUMMER BUILDING PROJECTS.***

## **WE CAN CONNECT YOU WITH THE RIGHT VENDORS AND PRODUCTS...**

- SAFETY FEATURES
- FRESH FLOORING
- NEW DRAPERY
- SPECIALTY CLEANING
- UPGRADED LIGHTING

- **Benjamin Moore** (quality paint and stain)
- **FORM-A-TREAD** (safe traction for steps, stairwells, ladders, etc.)
- **Wave Fabrications** (drapery, curtain and upholstery specialists)
- **Intelligent Signage** (indoor & outdoor signs, plaques, etchings)
- **LANline** (security cameras, phone systems)
- **DBM Inc.** (pest control inspection and application)

- SECURITY CAMERAS
- FIRE PROTECTION
- OFFICE REMODELING
- PAINT PROJECTS
- PEST CONTROL

**INSTITUTIONAL COMMODITY SERVICES**

646-794-2600

[www.NYICS.org](http://www.NYICS.org)

1011 First Avenue, New York, NY 10022

# *Building Security System*



KEEP AN EYE ON YOUR PREMISES, EVEN  
WHEN YOU AREN'T THERE...

ICS offers a financing program for a closed-circuit camera building security system. We have secured premium pricing with two state-of-the-art telephone technology companies. Our relationship with these firms enables us to provide wholesale purchasing contracts along with comprehensive service agreements.

Our commitment to you, as your equipment/systems partner, includes arranging an initial consultation to thoroughly evaluate the needs of your organization. In addition, we will secure more than one bid for your consideration and ensure that the proposals are appropriately consistent with your building's requirements.



CONTACT YOUR LOCAL ICS REPRESENTATIVE FOR ANY QUESTIONS YOU MAY HAVE AND FOR ASSISTANCE IN EVALUATING YOUR  
OVERALL SECURITY REQUIREMENTS.

# PROTECT YOUR BUILDINGS, PROTECT YOUR EMPLOYEES AND VOLUNTEERS...



**Total Fire Protection (TFP)** performs complete fire and life safety services for organizations with multiple buildings of varying sizes; their professional technicians bring decades of experience in keeping all of your facilities up to code. TFP looks to develop lifelong relationships with their clients and partners. Every customer of TFP is assigned a specific consultant who will design cost-effective fire and life safety solutions that are thorough, appropriate for your building(s), and are in line with budget restrictions.



## Why is it important to have a safety protection program?

It is critical to note that fire safety codes and regulations are **not static** and can undergo rapid change on a local, state, or national level. TFP's fire and life safety professionals will keep your buildings up-to-date with National Fire Protection Association (NFPA) code, OSHA regulations and Local Law. By doing this, you will never be caught unprepared for an inspection by the fire department or a fire marshal.

**INTERESTED IN LEARNING MORE ABOUT FIRE PROTECTION SERVICES AT YOUR PARISH?**  
IF YOU ARE CONCERNED ABOUT FIRE AND SAFETY ISSUES IN THE BUILDINGS THROUGHOUT YOUR PARISH, CONTACT ICS (646-794-2600) AND A REPRESENTATIVE WILL BE ABLE TO ARRANGE AN ONSITE INSPECTION FOR YOU.

NOT ONLY WILL YOU BE KEEPING YOUR EMPLOYEES, VOLUNTEERS, AND PARISHIONERS SAFE AT ALL TIMES - YOU WILL REMOVE THE POTENTIAL RISK OF A FINE

# FLOOR SAFETY AND ADDED SURFACE PROTECTION THROUGHOUT... FROM THE MOMENT YOU STEP INSIDE!



## Crown Total Care 3-Mat System™

- Each mat in the system is designed to offer specific floor protection features
- All mats have an overall thickness of 5/16" and a ThermoFlex™ vinyl backing and borders that reduces mat movement
- Attractive two-tone colors and resilient construction resist fading

### Fore-Runner™ 155 Mat

- First mat in System
- Scraper mat for medium traffic
- Use: indoor or outdoor
- Non-absorbent, abrasive surface scrapes soil and debris from footwear

### Cross-Over™ 255 Mat

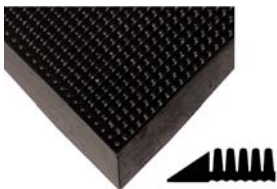
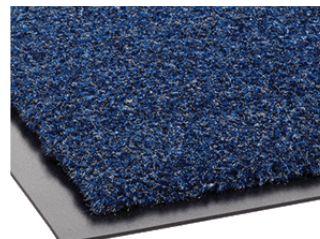
- Second mat in System
- Scraper/wiper mat for medium traffic
- Use: indoor or outdoor
- Abrasive loop-pile surface scrapes debris and moisture from footwear while sturdy olefin fibers start the drying process

### Walk-A-Way™ 355 Mat

- Third mat in System
- Wiper mat for medium traffic
- Use: indoor
- Dense, fast-drying loop-pile fibers absorb remaining moisture and trap fine dirt particles



Colors top to bottom: Blue, Green, Brown and Gray



### Crown Mat-A-Dor™ 100

- Outdoor scraper mat ideal for medium traffic
- 5/8" thick rubber corrugated back and molded edging
- Beveled edges reduce tripping hazard
- Easy to keep clean
- Black



### Crown Super-Soaker™ 250

- Indoor scraper/wiper mat ideal for medium traffic
- Non-skid nib backing will effectively grip mat to the floor
- Crush-proof waffle pattern will scrape shoes and hold dirt beneath shoe level while wiping moisture
- Rubber border
- Colors top to bottom: Blue, Charcoal, Burgundy, Forest Green and Dark Brown

• TAKE THE FIRST STEP - CONTACT YOUR ICS SALES REP OR OUR CUSTOMER CARE GROUP... 646-794-2600

• QUALITY CARPET AND MATTING - ALL AVAILABLE AT SIGNIFICANT DISCOUNTS

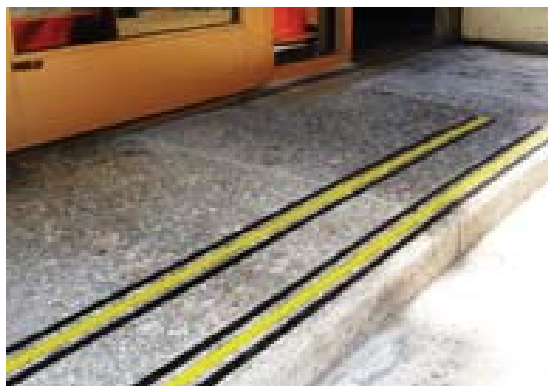
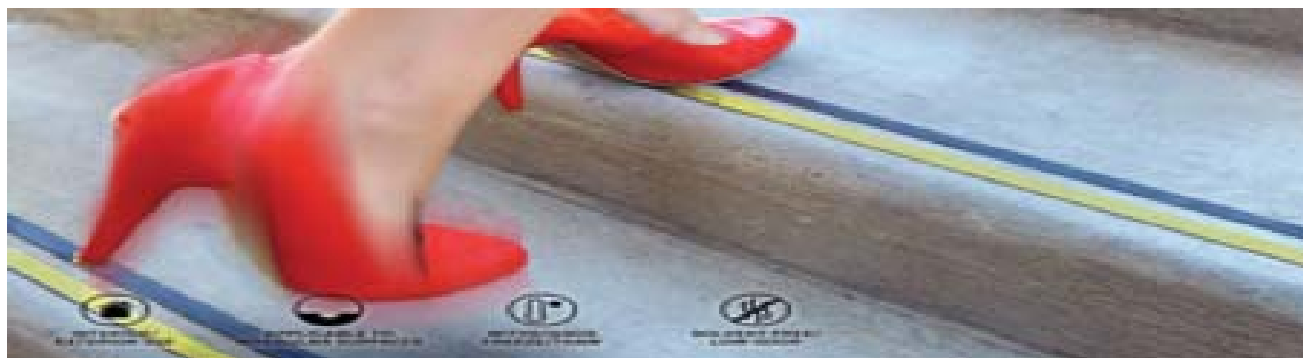
# TAKE SOME EASY STEPS... TO CREATE SOME SAFE STEPS!

## FORM-A-TREAD®

**Form-A-Tread®** is a form-in-place epoxy used to increase safety, traction and visibility on stairs, ramps, ladders, vehicles, wet areas and any location where ease of installation and extreme durability are needed.

Form-A-Tread can also be used to create detectable warnings at curbs and drop offs. The product can be used indoors or outdoors and is exceptionally durable in areas exposed to chemical, weather, and temperature extremes. Its paste (no drip) consistency makes it clean and easy to use, even on sloped and irregular surfaces.

Form-A-Tread adheres to all common building surfaces like concrete, stone, brick, wood, fiberglass, and metal (no priming needed).



Effective on indoor and outdoor steps...



...and some applications illuminate in darkness.

"We are very happy with Form-A-Tread... it's extremely easy to apply and truly lives up to its specifications!"

- Director of Facilities - St. Ignatius Loyola Church, Manhattan

**INTERESTED?**  
**FOR MORE INFORMATION ABOUT FORM-A-TREAD,**  
**CONTACT ICS AT 646-794-2600.**

# CAN EVERYONE READ YOUR SIGNS?



Think about the new signage needs that you have been considering for the front of your church, OR for the inside of your school, OR outside your parish center... **Intelligent Signage** can consult on any project, no matter how large or small.

## EXTERIOR SIGNS



## INTERIOR SIGNS



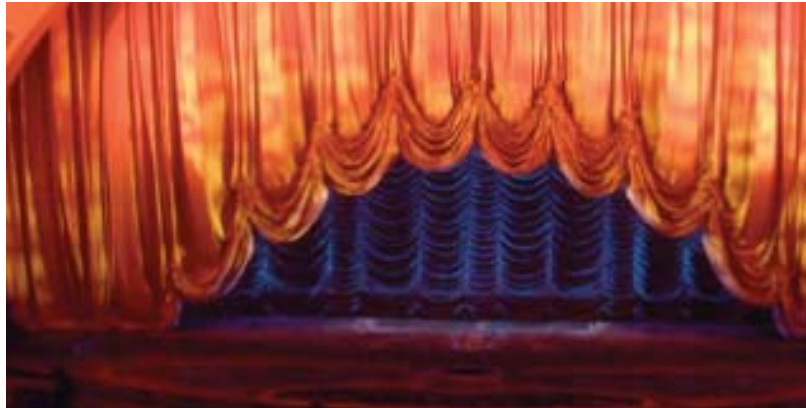
OR HOW ABOUT?...  
...DEDICATION PLAQUES... MEETING ROOM DESIGNATORS...  
DIRECTORIES... MONUMENTS...  
BUILDING WALL ETCHINGS... ILLUMINATED LETTERING

Ready to have your buildings reflect the 'signs' of the times? Contact ICS at 646-794-2600 and one of our Customer Care representatives will arrange an appointment for you with **Intelligent Signage**.



# WAVE FABRICATIONS INC.

*... specializing in fire-resistant curtains and drapes.*



**Wave Fabrications, Inc. (Wave)**, based in New York, is a full service textile business that specializes in the sale of fabrics and the manufacturing of drapes, stage curtains, auditorium seat covers, healthcare curtains, exhibition drapes and skirting, catering facility table cloths, napkins, decoration items, etc.

Wave's inventory comes with a wide variety of fabric selections, including: cotton velour, doral, prism, quality cube, double diamond (to name just a few). Wave can **customize each project/job** and guarantees that all installations are safe, appropriately fire-resistant, and in compliance with all of the local overseeing building code authorities.

## CONSIDER YOUR FABRIC/DRAPERY NEEDS FOR...

- CLASSROOM WINDOWS, CLASSROOM DOORS
- AUDITORIUM STAGE
- MEETING ROOMS
- PRIVACY CURTAINS
- FURNITURE UPHOLSTERY



ARE YOU THINKING THAT IT MIGHT BE THE RIGHT TIME TO REPLACE THOSE CLASSROOM DRAPES... OR, PERHAPS INSTALL A NEW AUDITORIUM CURTAIN? IF SO... CALL ICS AT 646-794-2600 AND WE WILL ARRANGE AN APPOINTMENT FOR YOU WITH A REPRESENTATIVE FROM WAVE FABRICATIONS.

# ENHANCE YOUR IMAGE AND HELP KEEP YOUR BUILDINGS CLEAN

*You can open your doors with confidence knowing that Cintas has you covered with a wide range of products and services that enhance your image and help keep your facilities and employees clean, safe and looking their best. Cintas will keep you Ready for the Workday® - so you can keep focusing on your buildings.*



## FIRE PROTECTION

Help keep your facilities prepared with National Fire Protection from Cintas.

Services include:

- Exit and Emergency Lighting
- Fire Extinguishers
- Sprinkler and Suppression Systems
- Fire Alarm and Monitoring



## FIRST AID & SAFETY

With regularly scheduled service visits, Cintas will help you manage your program and keep you **Ready™** for the unexpected. Services include:

- First Aid Cabinets and Supplies
- AEDs and Emergency
- Safety Supplies and PPE
- Compliance Training

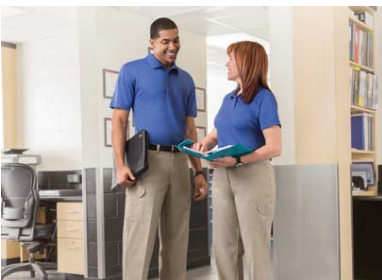


## FACILITY SERVICES

You're busy focusing on your school. So the last thing you need to worry about is your lobby being clean, your restrooms being stocked and your floor mats being replaced.

With scheduled service visits, Cintas will help keep every corner of your school **ready**.

- Mats and Mops
- Cleaning Chemicals
- Tile and Carpet Cleaning



## UNIFORM RENTAL

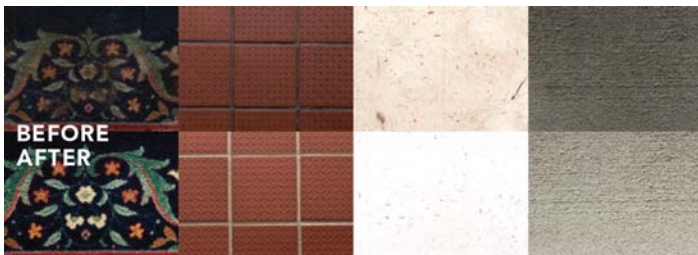
Keep your workforce looking professional in retail-inspired uniforms. Your employees will feel at their best with stylish, comfortable apparel they actually want to wear. And you'll appreciate that Cintas' full-service rental program takes care of your laundry, repair and weekly delivery.

Being Ready for the Workday begins here. To learn more contact ICS at 646.794.2600.



# TAKE YOUR FLOOR CARE TO THE NEXT LEVEL...

A clean floor says “welcome” to your parishioners and students. A floor deeply cleaned on a routine basis elevates your positive image and helps your flooring last longer. Cintas delivers our proven method of deep cleaning so that you'll know your floors are both properly cared for and projecting a sparkling clean image. Using a process that's Certified Gold by The Carpet and Rug Institute (CRI), we remove between 80 and 89 percent of soil, along with water and moisture. Our technology is powerful, but does not hurt your carpet pile.



*Benefit from national account pricing  
and get your floors cleaned*

## TILE CLEANING

Initial cleaning/standard tile

PRICE PER  
SQUARE FOOT

**\$0.73**

## CARPET CLEANING

4 step process initial cleaning

2 step process initial cleaning

PRICE PER  
SQUARE FOOT

\$0.15

\$0.10

For more information on how deep clean floor service can help you, contact ICS at 646.794.2600.



**A case study revealed that regularly scheduled floor cleanings cut the cost of maintenance by 22% and doubles the life of a floor.\***



\*Bodo, R., & Meents, M. (2014). "A Case Study and Description of the Comprehensive Floor Care Plan of Carpet Maintenance." The Journal of Cleaning, Restoration, & Inspection, Volume 1 (Issue 3), 10-15.

# *Is Pest-Control an Issue at Your Parish?*



## **WE CAN HELP YOU GET IT RESOLVED – WE HAVE A NEW VENDOR THAT SPECIALIZES IN PEST-CONTROL.**

**Don't Bug Me Pest Control, Inc. (DBM)**, a leading provider of pest management and control-related services, is now recognized as a **preferred ICS vendor**.

Noteworthy qualities, strengths, and overall attributes of DBM include their:

- **Recognition** of the need to take a 'personal' approach to solving pest control problems, as they subscribe to the belief that no two situations are the same;
- **Willingness** to take the time necessary to evaluate and understand any unique circumstance that may be contributing to a problem at a particular location;
- **Standards** of service that require all technicians to work closely with customers to determine and recommend the most effective pest prevention solution and program – this includes offering pest management programs that are specifically tailored to the customer, no matter the size or number of buildings involved;
- **Promise** of promptness – which includes same day service – in order to give their clients a 'peace of mind' that once an infestation issue has been confirmed, the problem(s) will be resolved as quickly as possible; and
- **Industry experience** and expertise which enables them to design the ideal prevention program to appropriately address specific control issues at a given location.

ICS is pleased to recommend DBM as a pest-control vendor to protect those buildings that you manage – churches, rectories, schools, convents, parish centers, etc. We are additionally comforted by DBM's environmentally friendly approach with their service procedures, which is driven by an underlying philosophy that prevention is best!

As you think about retaining DBM, you may want to consider some of the basic components of their offering, including the following:

- Free inspections, basic practical advice, and same day service
- Readiness to provide you with sensible tips to reduce risk
- Dedicated support team that makes customer service their first priority
- Commitment that quality of service is never sacrificed
- Working carefully with customers to make sure they are fully protected.
- Assurance that, where food service is involved, the pest control program that DBM put in place will leave you worry-free during your food safety audits

ICS's contract with DBM has a **pricing schedule with very competitive and favorable discounts** that we will be able to pass along to the organizations we serve.

**DBM will answer any questions you may have and advise you of their various levels of service.**

**Contact DBM directly at 800-758-0038 and let them know that you are an ICS customer.**

*Ready to take on that  
painting project in your  
church, rectory, school, hall?*

*Be sure to use quality paint products!*



**Take advantage of the exclusivity...**

This is an **exclusive arrangement** with ICS because not just any store can sell Benjamin Moore paint and stain. Benjamin Moore trusts only their network of independently owned authorized retailers to sell their products and, through their agreement with ICS, these retailers are available to you.

**You get to buy 'local'...**

Our arrangement with Benjamin Moore allows you to easily purchase their quality paint **through their local dealer**.

NOTE: An account first needs to be established and ICS staff can assist you with the initial set up. Of course, you will then benefit from the **discounted pricing** established through ICS.



Contact your local ICS representative if you have any questions on how to join the ICS-Benjamin Moore program. Keep in mind that, once done, you will be able to make purchases of their quality products through the associated retailer near you.



*Over 75 years of  
service to the Church*

...Our mission is to serve all of the parishes, schools, and Catholic institutions in the New York tri-state area by connecting those entities with vendors that can deliver merchandise and services at the most competitive prices.

## The ICS Team

[www.NYICS.org](http://www.NYICS.org)

### CUSTOMER CARE:

**Kevin Sullivan, Manager**

646-794-2613

[kevin.sullivan@nyics.org](mailto:kevin.sullivan@nyics.org)

**Andrew Ong, Specialist**

646-794-2609

[andrew.ong@nyics.org](mailto:andrew.ong@nyics.org)

**Terrence (Terry) Clark, Specialist**

646-794-2623

[terrence.clark@nyics.org](mailto:terrence.clark@nyics.org)

### SALES:

**Peter Farrell, Sales Representative**

347-501-0188 / [peter.farrell@nyics.org](mailto:peter.farrell@nyics.org)

ALBANY, CONNECTICUT, QUEENS,  
BROOKLYN, EAST/NORTHEAST BRONX

**Bob O'Neill, Sales Representative**

845-323-6978 / [robert.oneill@nyics.org](mailto:robert.oneill@nyics.org)

SOUTH/NORTHWEST BRONX, WESTCHESTER,  
ROCKLAND, ORANGE, PUTNAM, DUTCHESS,  
ULSTER & SULLIVAN COUNTIES

**Magdoline Messiha, Sales Representative**

917-721-8373 / [magdoline.messiha@nyics.org](mailto:magdoline.messiha@nyics.org)

STATEN ISLAND, MANHATTAN

**James Seidel, Sales Representative**

845-304-5592 / [james.seidel@nyics.org](mailto:james.seidel@nyics.org)

CAMDEN, NEWARK

### SPECIAL SERVICES:

#### COPIERS & TELEPHONE SYSTEMS (Sales and Sourcing)

**James Seidel, Equipment Manager**

845-304-5592 / [james.seidel@nyics.org](mailto:james.seidel@nyics.org)

[equipment.leases@nyics.org](mailto:equipment.leases@nyics.org)

**Dorota Czyzewska, Equipment Coordinator**

646-794-2603 / [dorota.czyzewska@nyics.org](mailto:dorota.czyzewska@nyics.org)

Fax: 866-950-4250

#### AUTOMOTIVE (Sales, Leasing, Service)

**Sal Ervolino**

516-658-6009 / [sal@trinityautomotive.com](mailto:sal@trinityautomotive.com)

BROOKLYN, QUEENS, ROCKVILLE CENTRE, ALBANY

**Michael Chapman**

917-748-4902 / [michael@trinityautotwo.com](mailto:michael@trinityautotwo.com)

MANHATTAN, BRONX, WESTCHESTER, STATEN ISLAND

### SPECIAL SERVICES:

**Theresa Cullen-Seidel, Executive Director**

646-794-2735 / [theresa.cullen-seidel@nyics.org](mailto:theresa.cullen-seidel@nyics.org)